

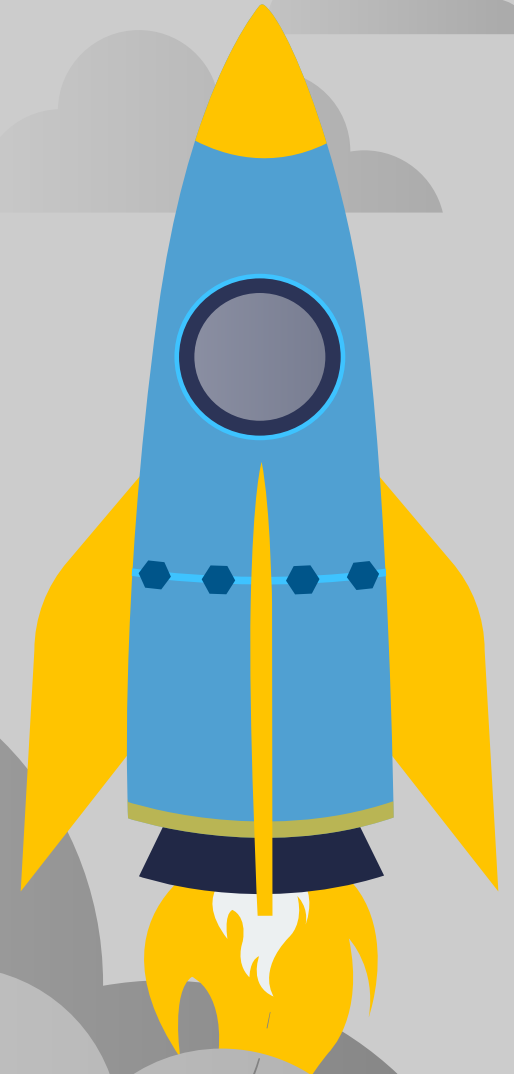


Citrix with Windows Virtual Desktop

Deliver the best virtual desktop experience for cloud and on-premises.

Let's talk about Citrix and Microsoft Windows Virtual Desktop.

Citrix, a worldwide leader in desktop virtualization, is officially authorized by Microsoft to bring the benefits of Windows Virtual Desktop to you.



Windows Virtual Desktop, what's that?

An Azure-native remote desktop and application virtualization service.

INCLUDED WITH

Microsoft 365 E3+
OR WINDOWS E3 SKUs

 **Windows 10**
MULTI-SESSION OS

 **Microsoft Azure**
ONLY, NOT FOR ON-PREMISES

 **Windows 7**
EXTENDED SUPPORT

"But I'm not ready for cloud-everything."

Moving to cloud is a series of steps, not a giant leap.

That's where Citrix Virtual Apps and Desktops helps.

Citrix Virtual Apps and Desktops lets you **manage on-premises and cloud** virtual apps and desktops side-by-side. It's the best way to **manage Windows Virtual Desktop and modernize your IT practices.**

- Transition to Azure at your pace
- Maximize on-premises investments and skillsets
- Maintain compliance and business requirements
- Use one tool for cloud and on-premises management

Tell me more!

When you combine the power of Citrix with Windows Virtual Desktop, you achieve amazing things.



Step into hybrid cloud.

Citrix lowers your **time to value** by making it **faster and easier** to manage existing on-premises production apps and desktops alongside new Azure deployments. The Citrix tools you already know and love, lets you **centrally manage images** across on-premises and Azure deployments, **streamlining lifecycle management**.



Give people an experience they want.




Eliminate barriers to adoption by giving people a **flexible, intelligent workspace** experience with **Citrix Workspace app**.

The blazingly fast, high-definition Citrix HDX experience lets you run even the most demanding apps like 3D, CAD, and streaming video on the **device of your choice**.

Modernize IT monitoring and control.

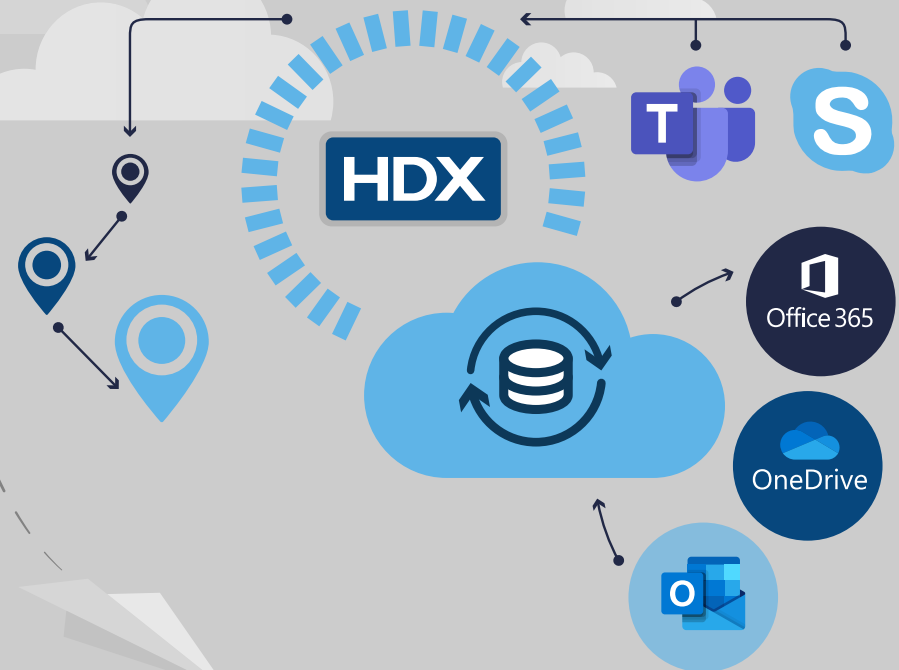
Turbo-charge Microsoft Teams and Office 365.

Say goodbye to choppy video and bad audio. Citrix ensures virtualized **Teams and Skype for Business** sessions always have **high-fidelity video and crystal-clear voice** from any location – even bandwidth-constrained branches and field locations. Plus, Outlook, OneDrive, and Office 365 apps perform flawlessly, and data always stays synchronized.



The diagram illustrates a real-time policy engine. At the top, a monitor displays various data visualizations: a world map with location pins, a bar chart, a line graph, and a sun icon. Below the monitor, a city skyline is shown. A yellow location pin icon is positioned to the left of the skyline. Below the skyline, three circular icons are arranged horizontally: a person (representing user identity), a smartphone (representing device), and a shield with a checkmark (representing security). Arrows point from these three icons up to the monitor, indicating that they provide input to the policy engine.

Go beyond binary on/off access policies, with a **real-time policy engine** that adapts to user identity, location, device, and security postures. Continuous **monitoring and real-time analytics** trigger automated steps to adapt to changing security and performance conditions across Azure and on-premises.



An enterprise-ready solution for today, tomorrow, and beyond.

➤ Simple

Reduce time to value by leveraging Citrix deployment tools to get up and running right away.

➤ Flexible

Superior management, monitoring, and provisioning tools make managing Windows Virtual Desktop a breeze.

Citrix Virtual Apps and Desktops service



Windows Virtual Desktop

➤ Comprehensive

The most all-inclusive way to intelligently transform into a digital workplace.

➤ Hybrid

The best way to centrally manage your on-premises and new Azure desktops.

Your company's path to cloud starts here!

more.citrix.com/wvd



Copyright© 2019 Citrix Systems, Inc. All rights reserved. Citrix, the Citrix logo, and other marks appearing herein are property of Citrix Systems, Inc. and/or one or more of its subsidiaries, and may be registered with the U.S. Patent and Trademark Office and in other countries. All other marks are the property of their respective owner/s.